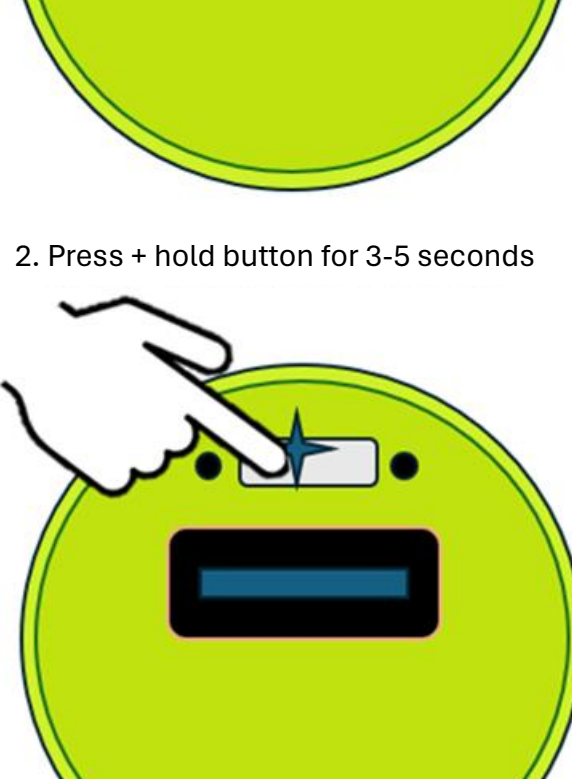


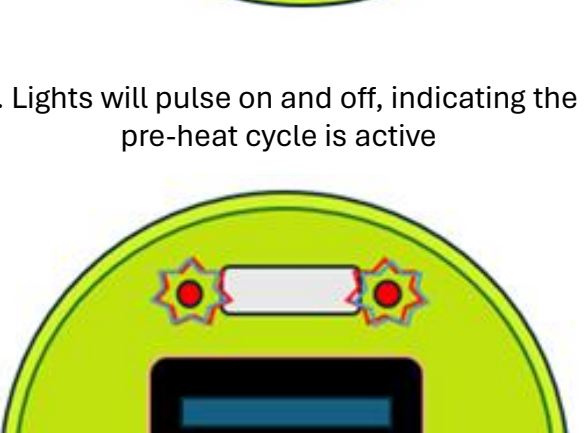


### Pre-Heating our Devices:

1. Locate the flavour change/Twist button (Bottom of device)



2. Press + hold button for 3-5 seconds

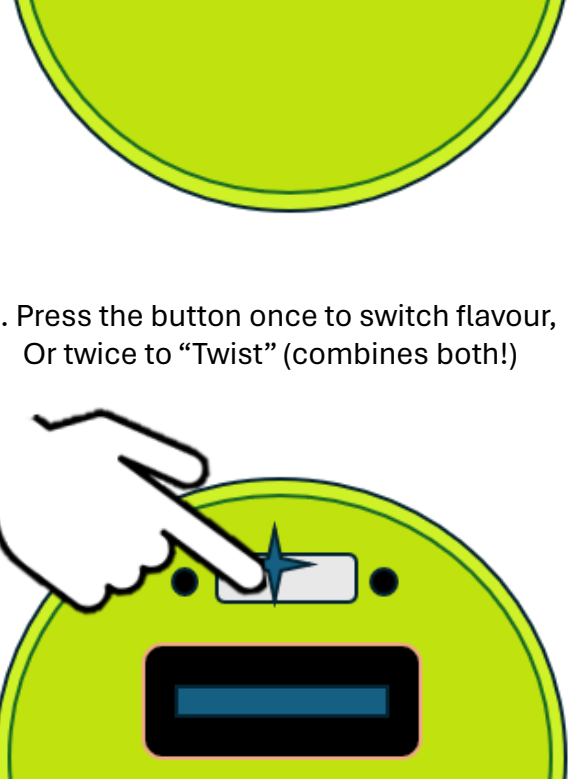


3. Lights will pulse on and off, indicating the pre-heat cycle is active



### Flavour Switch & "Twist" Feature:

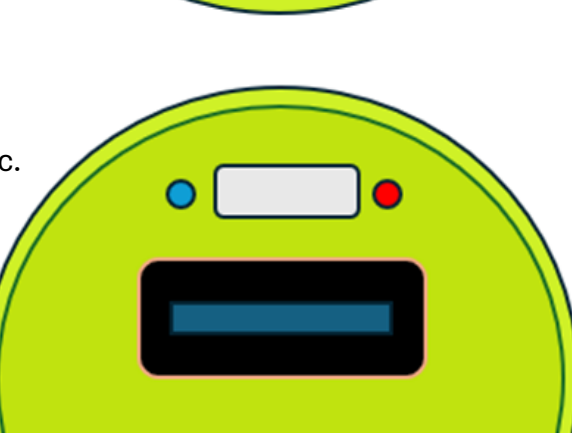
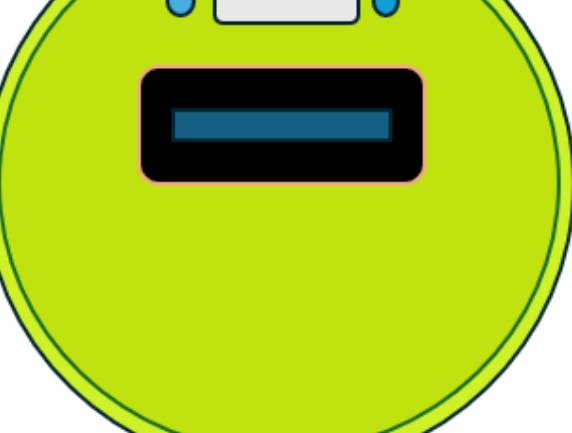
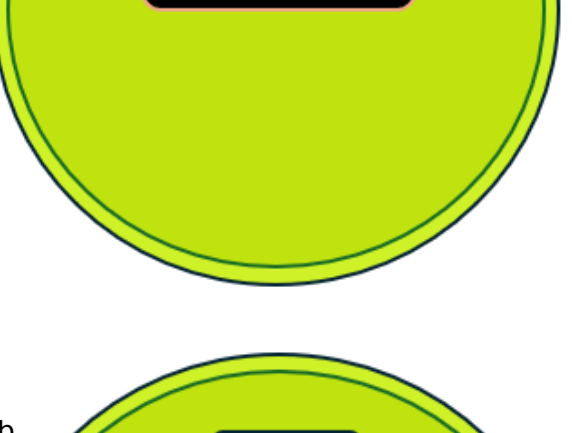
1. Locate the flavour change/Twist button (Bottom of device)



2. Press the button once to switch flavour, Or twice to "Twist" (combines both!)



3. LED lights are colour coded for ease of use (see package for convenient colour: flavour guide!)



(Fig. a + b: Alternating between flavours)  
(Fig. c: "Twist" mode)

4. Inhale through mouthpiece to dispense vapour

